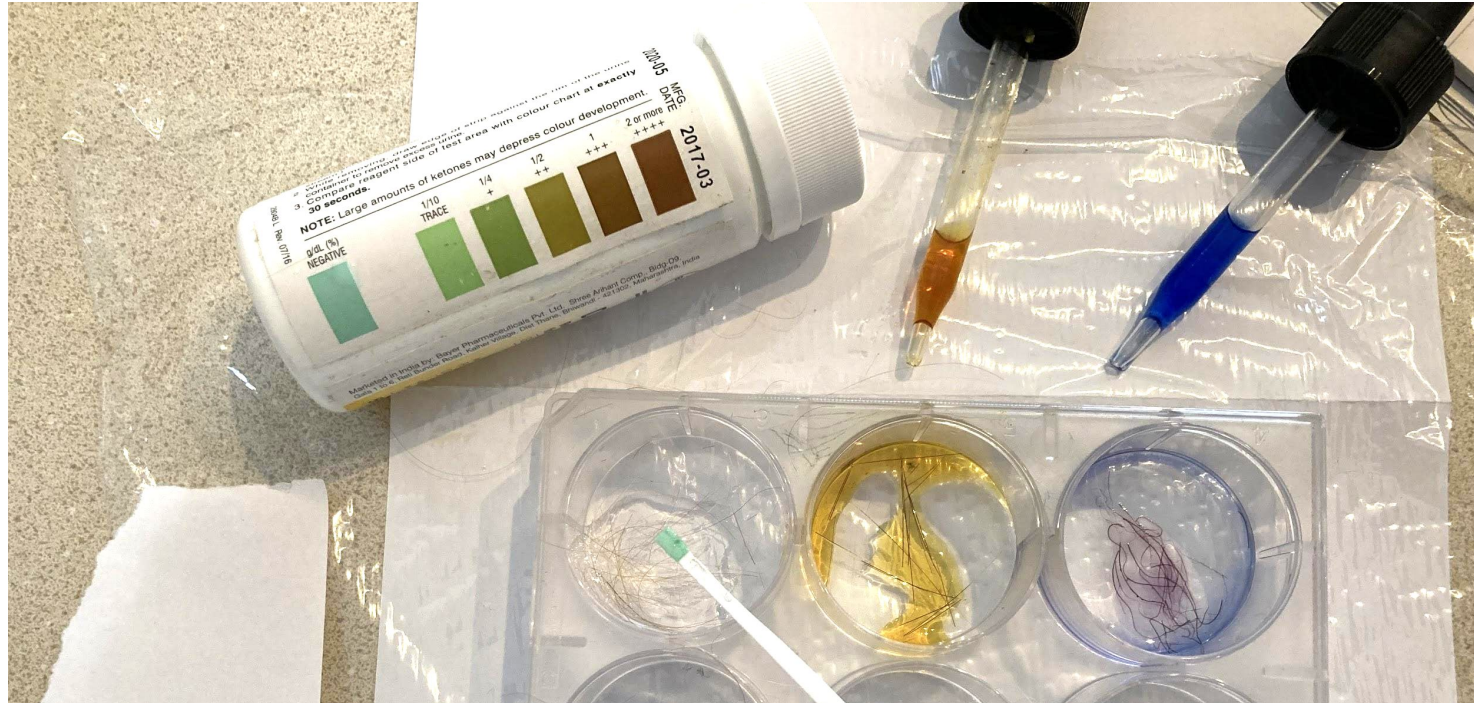


# Hair Macromolecule Tests

Close-ups on slide 2, description of tests on slide 3



**Fat**

**Glucose**

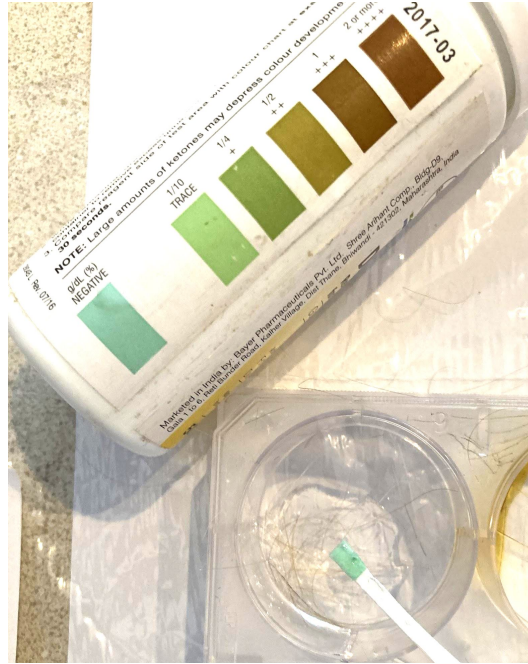
**Starch**

**Protein**

## Fat



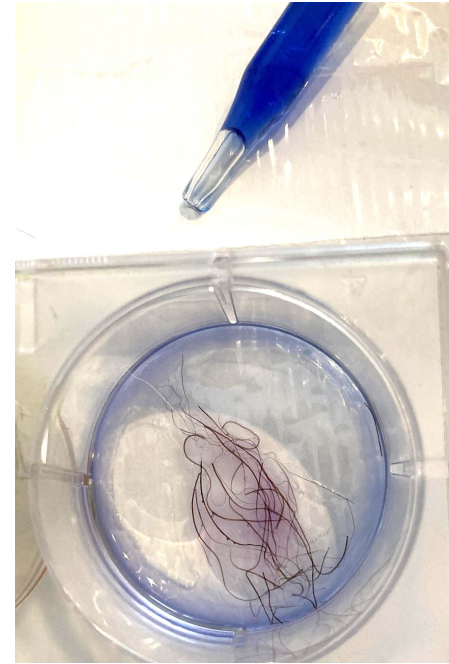
## Glucose



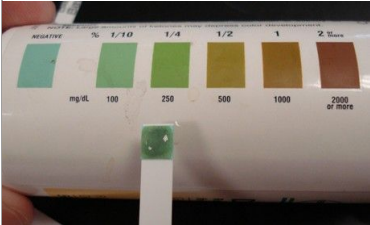



## Starch



## Protein



# Chemical Tests for Different Molecules

| Glucose   | Starch   | Protein   | Fats/lipids  |
|---|--|---|--|
| Test strips   | Lugol's iodine   | Biuret solution   | Paper  |
|  <p>If glucose is present, the indicator part of the test strip changes from teal blue to green or brown</p> |  <p>If starch is present, iodine changes from a yellowish brown to a bluish black around the starch</p> |  <p>If protein is present, Biuret solution turns from blue to purple around the protein</p> |  <p>Lipids in food stain paper, turning it translucent (you can see light through it)</p> |